

**ELECTRICAL RATINGS**  
MAX. CONTINUOUS CURRENT (IN AMPS)

LIMIT SWITCH CLASS	H	
A.C. 50% P.F.	125V	10
	250V	10
	480V	3
	600V	—
D.C.	125V	—
	250V	—

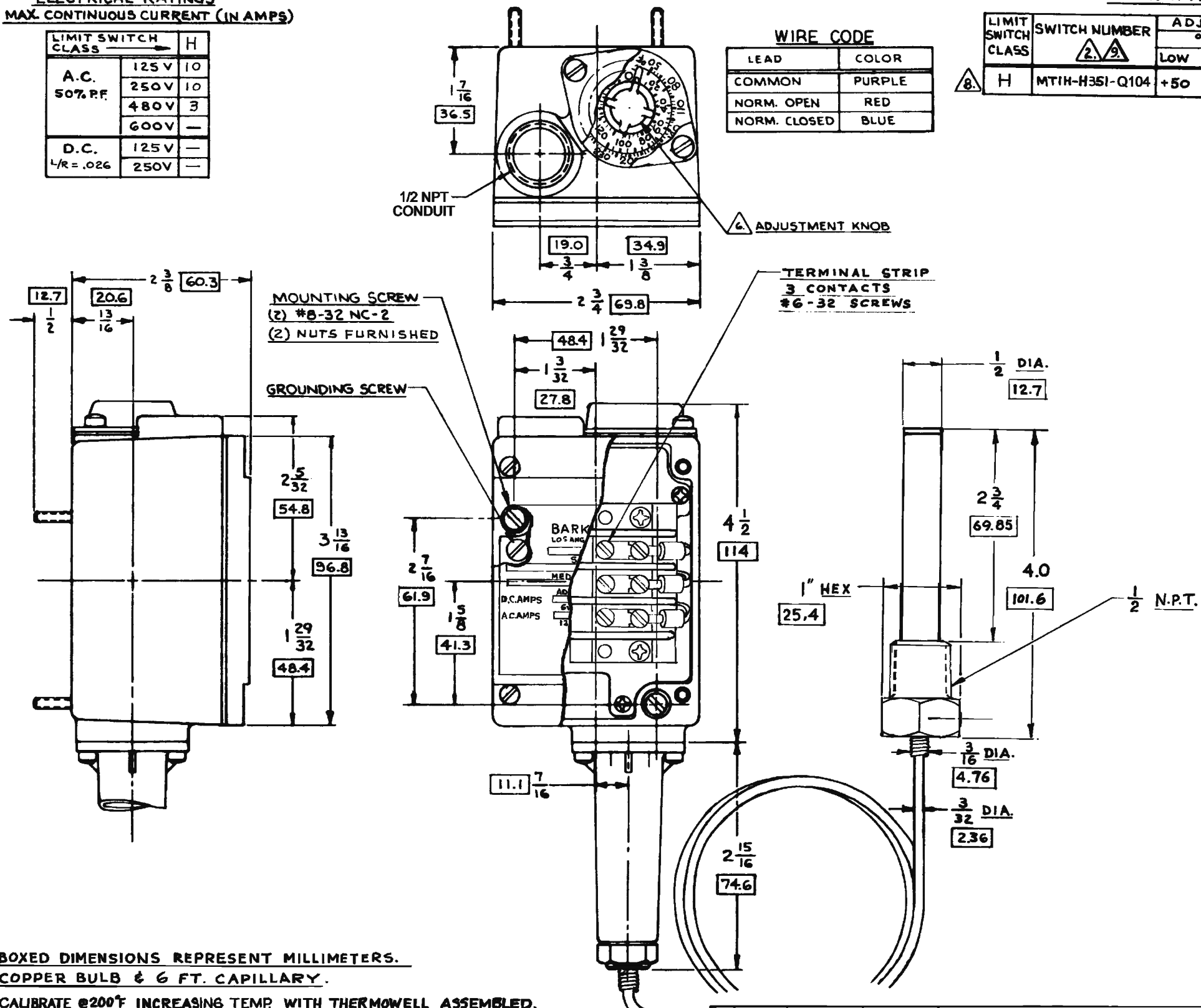
L/R = .026

**OPERATING CHARACTERISTICS**

LIMIT SWITCH CLASS	SWITCH NUMBER	ADJUSTABLE RANGE				APPROX. DIFFERENTIAL	
		°F		°C		°F	°C
H	MT1H-H351-Q104	+50	+350	+10	+175	1-2	.5-1.1

**WIRE CODE**

LEAD	COLOR
COMMON	PURPLE
NORM. OPEN	RED
NORM. CLOSED	BLUE



10. BOXED DIMENSIONS REPRESENT MILLIMETERS.
- ② COPPER BULB & 6 FT. CAPILLARY.
- ③ CALIBRATE @200°F INCREASING TEMP WITH THERMOWELL ASSEMBLED.
7. WATER-TIGHT HOUSING (NEMA-4).
- ④ ADJUSTMENT INSTRUCTIONS: TURN ADJUSTMENT KNOB CLOCKWISE TO INCREASE ACTUATION POINT.
5. SWITCHING ELEMENT: SINGLE-POLE, DOUBLE THROW TYPE.
4. SWITCH MAY BE WIRED NORMALLY OPEN OR NORMALLY CLOSED.
3. SWITCH MAY BE MOUNTED IN ANY POSITION.
- ② WHEN ORDERING, SPECIFY SWITCH NUMBER AND SETTINGS REQUIRED TO INSURE OBTAINING CORRECT SWITCH.
1. MEDIA TEMPERATURE LIMITS (PROOF): -100°F LOW TO +400°F HIGH, -73°C LOW TO +205°C HIGH.
- NOTES:

DRAWN	CHECKED	APPR.	SPCL. TEMP. SWITCH-SINGLE SETTING		
RAM		YK	ENCLOSED TERMINAL STRIP-REMOTE BULB		
1-11-07		1-11-07	MODEL +50°F TO +350°F		
UNLESS OTHERWISE SPECIFIED					
TOLERANCES: FRACTIONAL ± 1/16 DECIMAL ± .010 ANGULAR ± 5'					
PART NO. IS CERTIFIED TO CONFORM TO THE SPECIFICATIONS SHOWN ON THIS DRAWING					
Barksdale Barksdale, Inc. Los Angeles, CA					
REV. A	PCO 00005082	1-11-07			
WEIGHT	SCALE	DWG. NO.	SIZE	CHG.	
1 3/4 LBS	NONE	C	MT1H-H351-Q104	A	

REV. C MT1H-H351-Q104